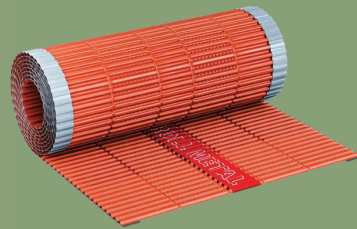


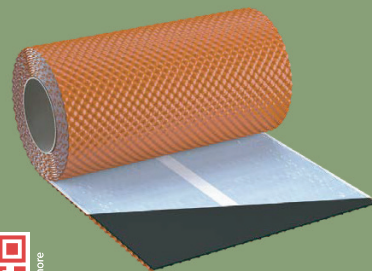
UNDERLAY: PREMIUM Reflex & BARRIER ALU



RIDGE: Koraroll - STANDARD /PREMIUM Flex Ridge Roll



ABUTMENT: KORAFLEX - MULTIFLASH/PROFILFLASH ALU



ROOF WINDOW



Continental 9/Twiston 9

Clay Roof Tiles

Redefining Roofs with Beauty and Brilliance



Flawless design turns each tile into a showcase of craftsmanship

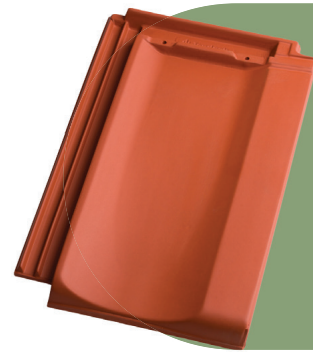
w wienerberger

Wienerberger India Private Limited
 88/4, Richmond Road, Richmond Town,
 Bengaluru, Karnataka - 560 025
 +91 80 4149 1682/7
 marketing@wienerberger.in
 www.wienerberger.in

Brought to you by:
 wienerberger, the World leader in Clay building materials
200+ Years | 200 Factories | 28 Countries
 wienerberger has become the foremost authority when it comes to natural, sustainable, green building material solution provider. We are headquartered in Vienna, Austria.

w wienerberger

Continental 9



Contemporary Designs Meets Timeless Elegance

All the tiles are created with a unique personality, strength, elegance, simplicity - ideal for modern and innovative projects. Crafted with impeccable finishing, refined texture, and exceptional durability.

- Clean and modern profile that suits contemporary architecture while retaining clay-tile charm.
- Large-format clay roofing tiles ideal for both renovation and new builds.
- Double interlocking grooves and variable overlap guarantees a fully waterproof roof.
- A full range of fittings such as ridges, hip ends, verge tiles and 3 & 4 way apex, delivers complete functionality and a seamless roof finish.

SPECIFICATIONS

Length * Width	500 * 300 mm
Weight per Tile	3.6 Kgs
Batten Spacing	380- 430 mm
No.of Tiles per Sq.m	9 Tiles
Minimum Slope	21 degrees



Twiston 9



A Classical Touch to Modern Roofs

Made from premium-quality clay, these tiles offer exceptional resistance and flexural strength, exceeding industry norms. Their versatility suits any environment, enabling striking roof designs in a wide range of colours. A double lateral and top interlock system ensures superior sealing and complete waterproofing.

- Smooth, gentle waves that reflect refined architectural styling.
- Modernized tile with traditional elements in larger format.
- Double-groove design with nail holes ensures leak-proof alignment and easy installation.
- Engobe coating provides a permanent, weather-resistant colour finish.

SPECIFICATIONS

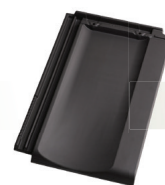
Length * Width	500 * 300 mm
Weight per Tile	3.6 Kgs
Batten Spacing	380- 430 mm
No. of Tiles per Sq.m	9 Tiles
Minimum Slope	21 degrees



Red



Brown



Black Matt



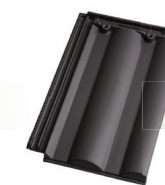
Black Glossy



Red



Brown



Black Matt



Black Glossy