



## Porotherm Application Guide Topic: Best Practices of Door & Window Installation

Step:1

Align the door with proper line and level



Step: 2

Drill a suitable hole as per the anchored size



Step: 3

Install the ancor



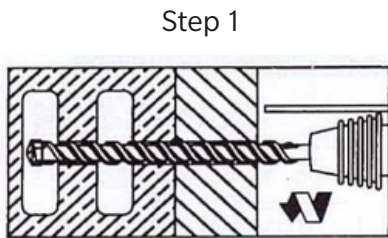
Step: 4

Install the anchor

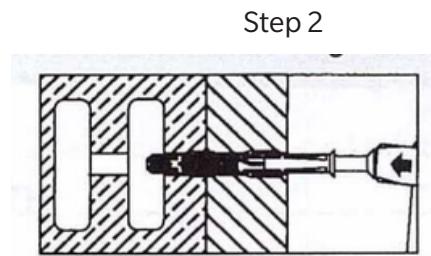




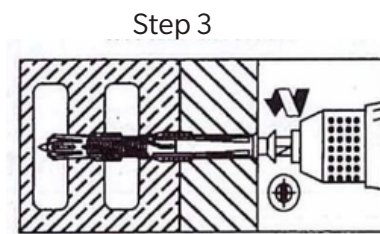
### Fixing Procedure



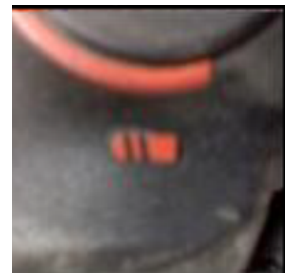
Drill hole with drill bit



Install anchor sleeve



Drive screw into anchor with torque



Rotary mode

### Note:

- Use drilling machine in rotary mode only
- Drill bits to be used as per the chosen anchor specification/ size
- Do not hammer the anchor for final installation
- Metal/Mechanical anchors are strictly avoided in Porotherm Walls
- Use of plastic sleeve anchors are recommended



No mechanical anchor